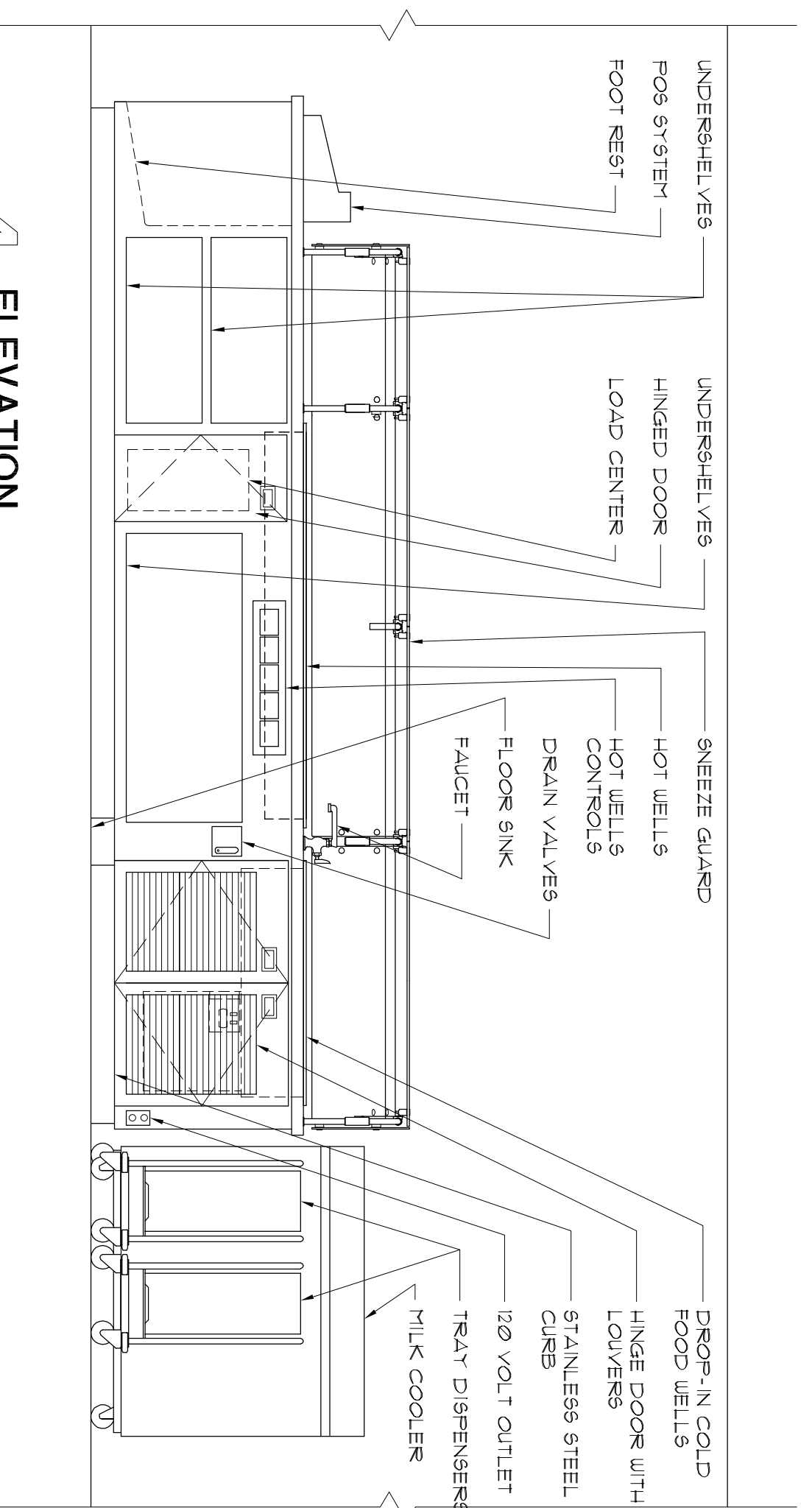


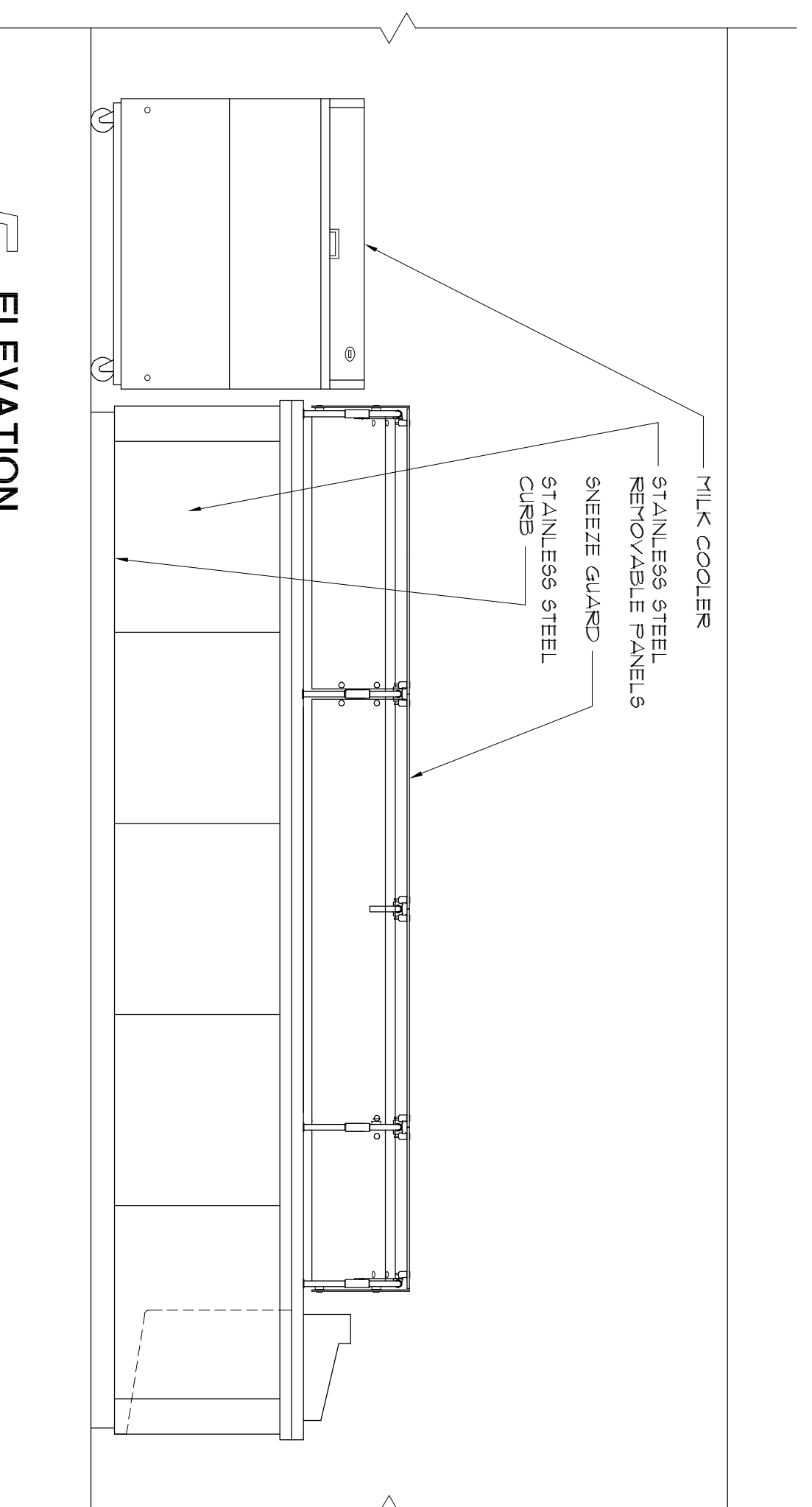
1 ELEVATION  
NO SCALE

2 ELEVATION  
1/2" = 1'-0"

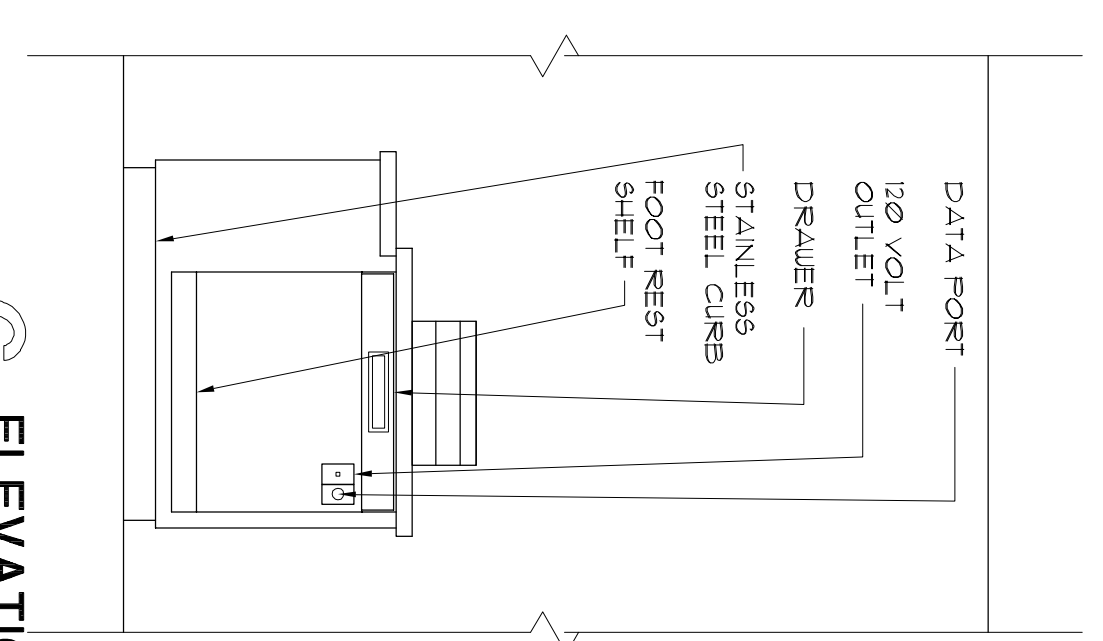
3 ELEVATION  
1/2" = 1'-0"



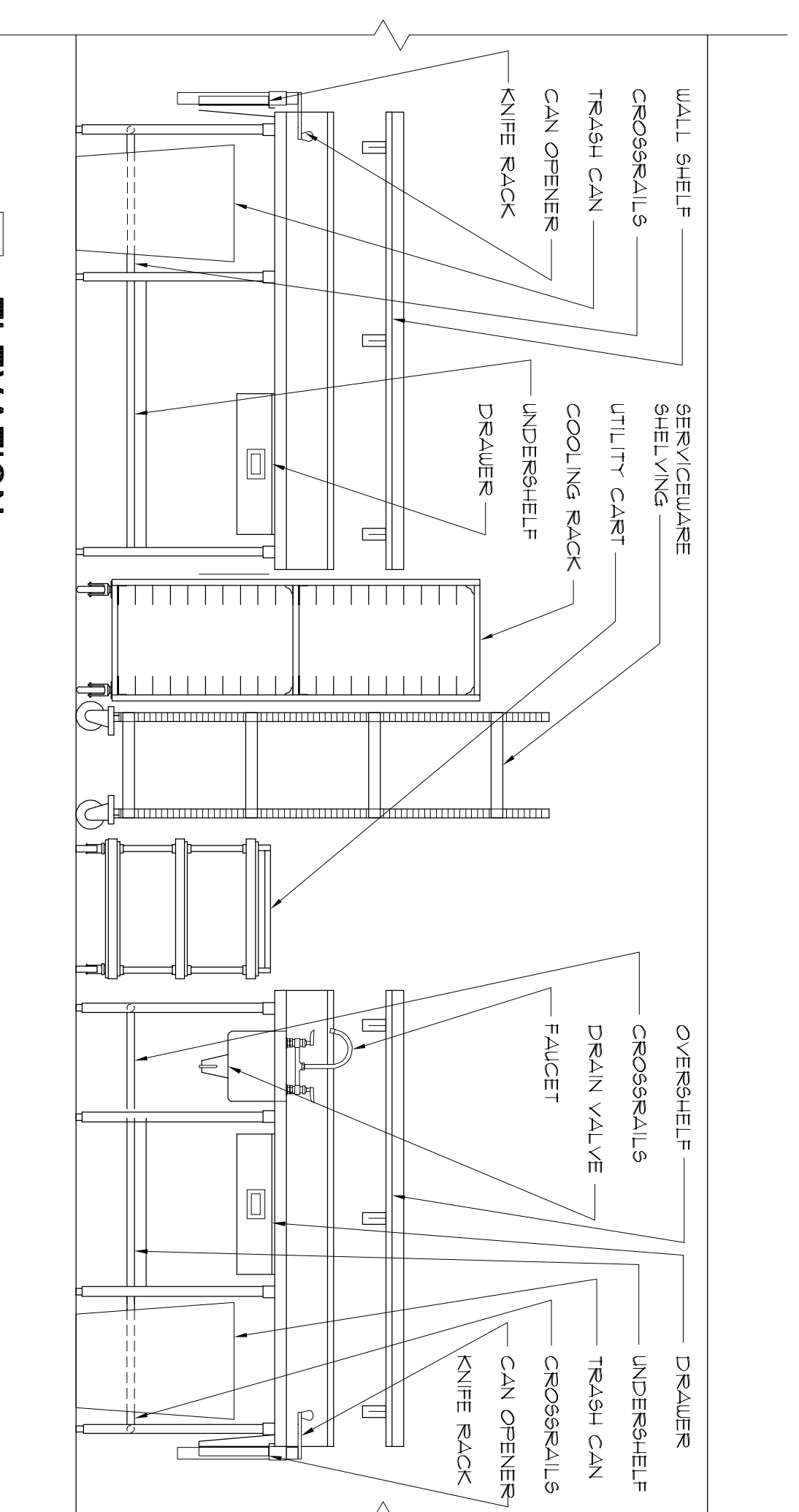
4 ELEVATION  
1/2" = 1'-0"



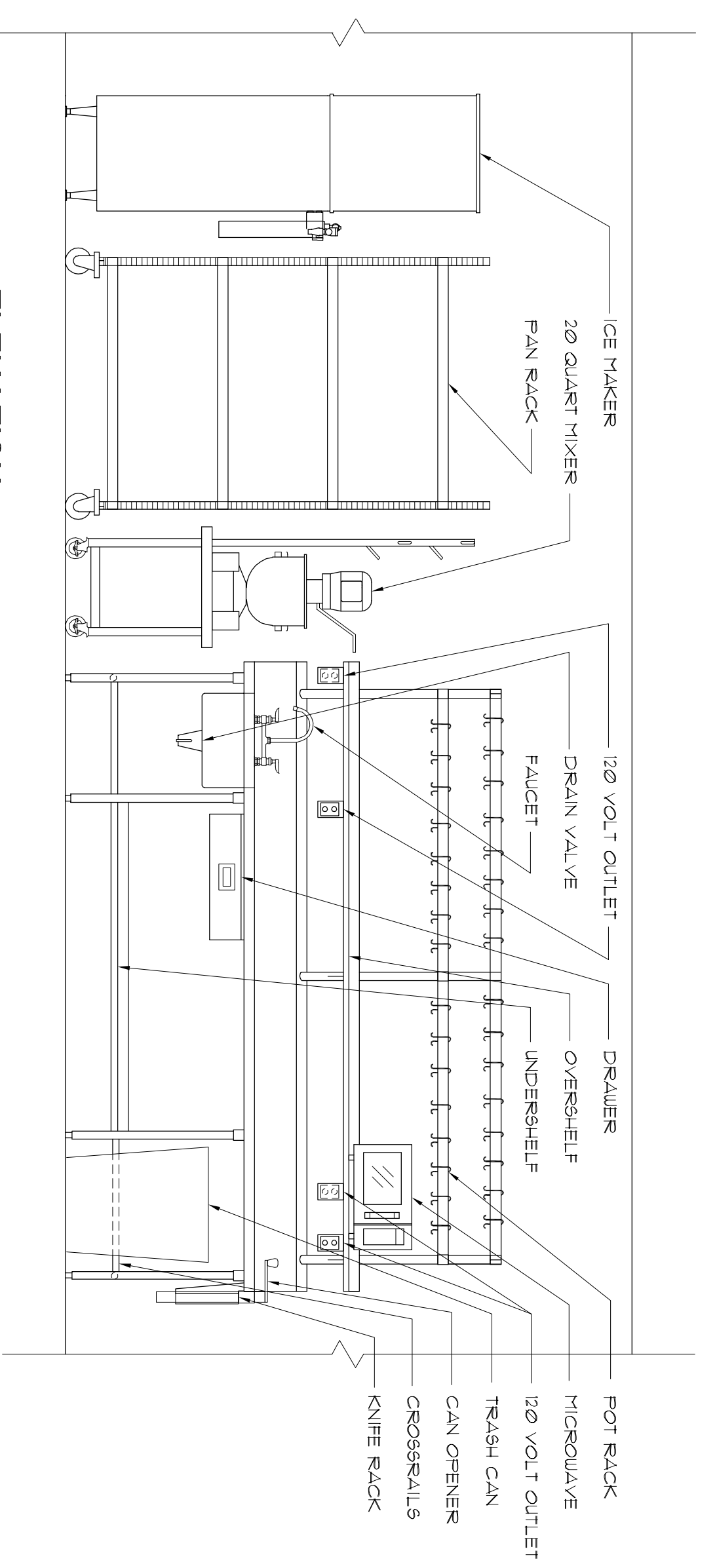
5 ELEVATION  
1/2" = 1'-0"



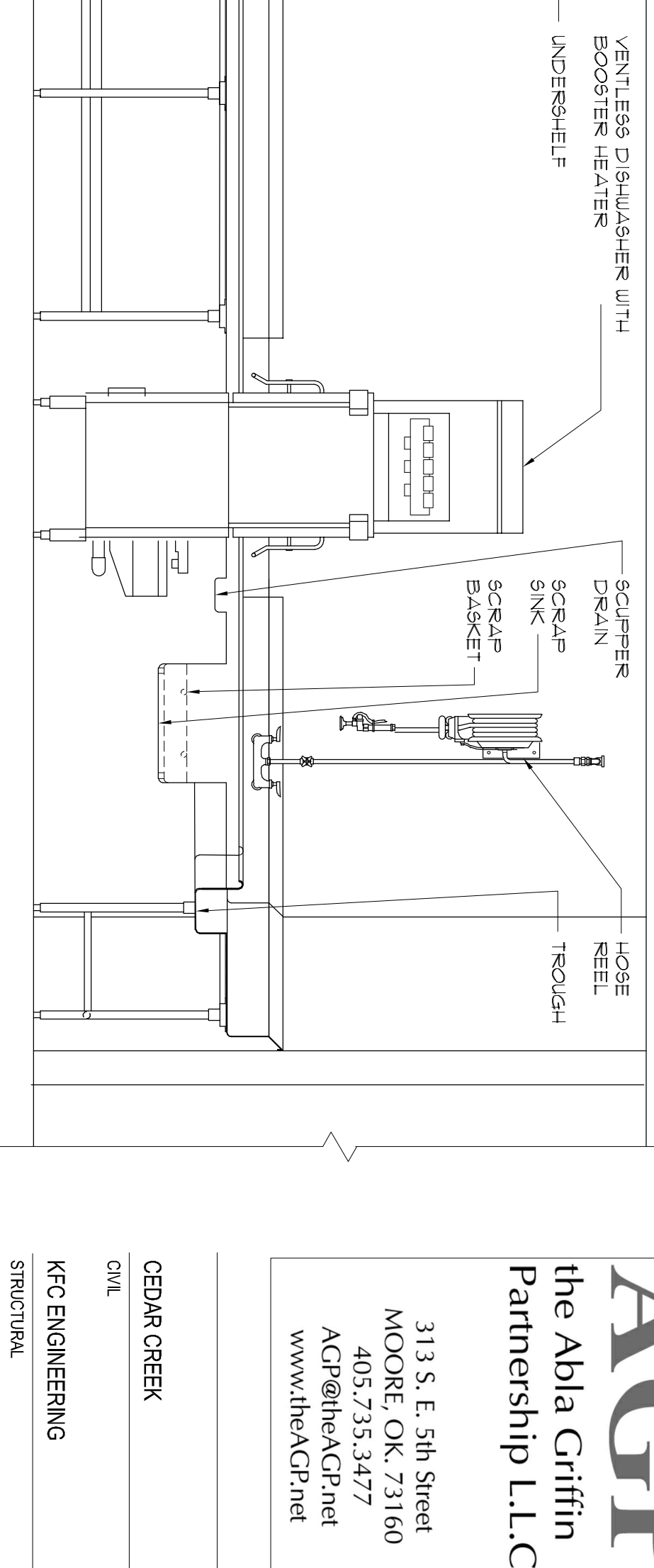
6 ELEVATION  
1/2" = 1'-0"



7 ELEVATION  
1/2" = 1'-0"



8 ELEVATION  
NO SCALE



**AGP**  
the Abila Griffin  
Partnership L.L.C.  
313 S. E. 5th Street  
MOORE, OK. 73160  
405.735.3477  
ACP@theAGP.net  
www.theAGP.net

CEDAR CREEK  
ONE  
KFC ENGINEERING  
STRUCTURAL  
SALUS O'BRIEN  
MECHANICAL/ELECTRICAL

**MOORE**  
PUBLIC SCHOOLS

CHILD CARE FACILITY  
201 N. EASTERN AVE.

FS102

OWNERSHIP USE OF DOCUMENTS:  
AGP EXPRESSLY RESERVES ITS  
COPYRIGHT AND OTHER PROPERTY  
RIGHTS OF ALL PLANS AND DRAWINGS  
DESIGNED AND/OR PRODUCED. PLANS  
AND DRAWINGS ARE NOT TO BE  
REPRODUCED IN ANY FORM OR MANNER  
WITHOUT THE EXPRESSED WRITTEN  
CONSENT OF AGP.

RS	drawn by	
RS	checked by	
10/29/2024	date	
	revisions	
11/20/2024	Addendum #1	